

# GARAGE DOOR OPERATORS

Centurion Systems offers automation solutions for all the major garage door types, including tip-up, sectional and roll-up. Our garage door operators are whisper-quiet, easy to install and, above all else, supremely reliable.



## XTrac

### Domestic Sectional and Tip-up Garage Door Operator

Product Code: VXTRAC0001 (Sectional); XTRAC0002 (Tip-up) See note about labelling

A quiet, safe and reliable garage door operator for sectional and tip-up doors with a maximum area of 12m<sup>2</sup>. A dual power system ensures that the XTrac remains in service even during lengthy power failures, while a clever design and superior lifting force make this CENTURION as strong as it is silent. It also comes equipped with a Wireless Wall Switch and onboard multichannel receiver with 32 button memory to facilitate convenient remote operation.

#### Main Features

##### Mechanical Features

- Battery backup (with dual power – always on)
- Revolutionary design providing whisper-quiet operation
- Quick and easy installation and adjustment
- Adaptive anti-crushing protection for greater safety
- Strong and reliable 24V geared DC motor
- Manual override can disengage and re-engage in any position
- Wireless Wall Switch for convenient activation of up to four different features:
  - Open and close the garage door
  - Switch the Courtesy Light on and off
  - Electronically lock the system for greater security
  - Override the Autoclose facility

##### Electronic Features

- Adjustable speed control – suitable for both sectional and tip-up doors
- Onboard CENTURION code-hopping multichannel receiver with selective add and delete
- Door Service Monitor

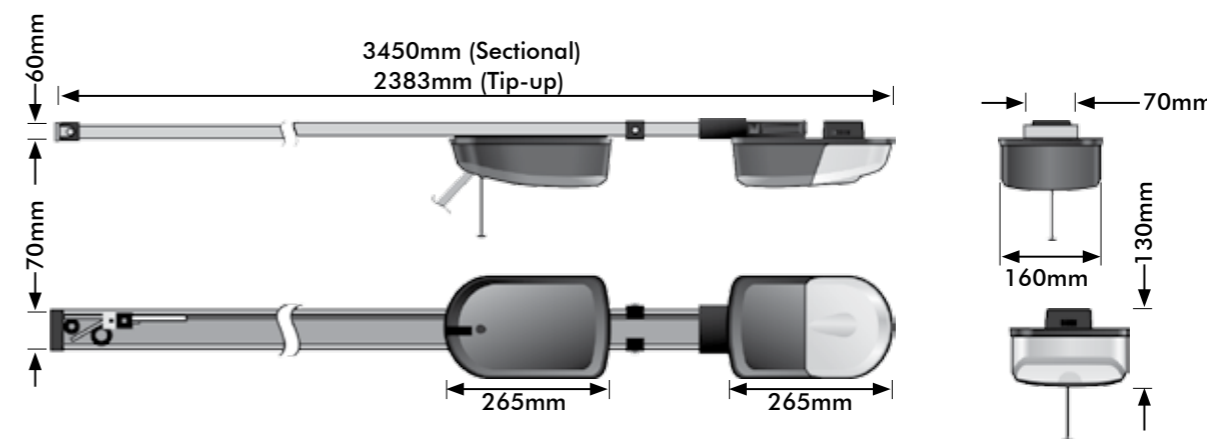
#### Technical Specifications

Technical Data	XTrac
Input voltage <sup>1</sup>	180V – 270V AC @ 50/60Hz
Motor voltage	24V DC
Motor power - rated	120W DC
Motor supply	Dual power – 250VA max. mains power supply, with 2 x 1.5Ah 24V battery backup supply
Maximum door width	6500mm
Maximum door area	12m <sup>2</sup>
Maximum lifting capacity	1200N
Operations in Standby Mode	12 to 30 depending on the door size/weight/height/duration of power failure
Operator travel speed	Adjustable – between 90 – 125mm/sec
Door travel adjustment	Manually adjustable limits with 1 to 1 adjustment ratio
Safety obstruction force system	Selectable manual/adaptive
Light	Bayonet 24V 21W
Autoclose <sup>2</sup>	Dipswitch selectable
Infrared Safety Beams	Optional, but recommended
Onboard receiver	CENTURION code-hopping; 433MHz
Receiver code storage capacity	22 transmitter buttons
Receiver frequency	433MHz
Wireless Wall Switch	4 functions; 433MHz
Packaging dimensions	Width: 288mm x Depth: 330mm x Height: 180mm

<sup>1</sup>. Can operate off a solar supply, consult Centurion Systems for assistance

<sup>2</sup>. Requires infrared Safety Beams to be fitted

**XTrac**™



**SECTIONAL & TIP-UP  
GARAGE DOOR  
OPERATOR**





## RDO

### Domestic Roll-up Garage Door Operator

Product Code: **RDO0001**

A compact and reliable operator for domestic roll-up garage doors. The RDO can be installed within minutes of arriving onsite, offers reliable battery backup and even comes standard with an onboard code-hopping receiver to add even more convenience to an already formidable product.

### Main Features

#### Mechanical Features

- Battery backup
- Whisper-quiet operation
- Strong lifting capability
- Quick and easy installation
- Anti-crushing protection for greater safety
- Convenient manual override

#### Electronic Features

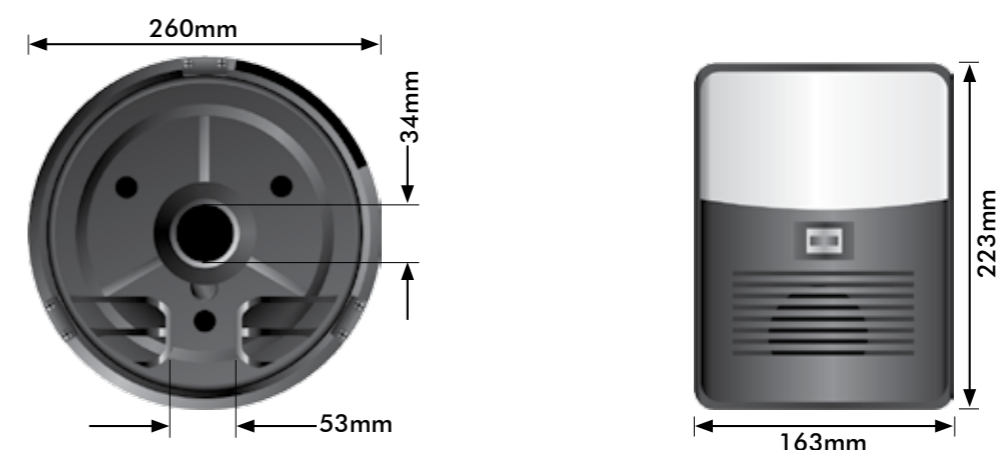
- Wall-mounted controller with Courtesy Light – bathes entrance in light whenever RDO is activated and remains on for a pre-set period of time afterwards
- Wireless Wall Switch for convenient remote operation

### Technical Specifications

Technical Data	RDO
Input voltage <sup>1</sup>	220V – 240V AC +/- 10% @ 50Hz
Motor voltage	24V DC
Motor power supply <sup>2</sup>	Battery-driven - 200mA charger - peak
Battery charger	Plug-in - 250mA @13.8V DC
Door operator	Drive unit attached directly to door drum
Controller	Wall-mounted unit with integrated light
Opening lift force	30kgf
Door travel speed	100 - 150mm/sec
Duty cycle - mains present <sup>3 4</sup>	20
Opening/closing travel limit	Max: 2.4m
Inherent safety mechanism	Electronic (adjustable)
Light	15W 24V DC Edison screw
Onboard receiver type <sup>5</sup>	CENTURION code-hopping, Voyager type
Receiver code storage capacity	36 transmitter buttons
Receiver frequency	433MHz
Wireless Wall Switch	1 x Single button CENTURION transmitter
Remote control included	1 x CENTURION code-hopping transmitter
Packaging dimensions	Width: 288mm x Depth: 330mm x Height: 180mm

<sup>1</sup>. Can operate off a solar supply, consult Centurion Systems for assistance  
<sup>2</sup>. 2 x 1.2Ah batteries (can be upgraded for longer power failure autonomy)  
<sup>3</sup>. Based on a lifting force of less than 50% of rated

<sup>4</sup>. Based on 25°C ambient temperature  
<sup>5</sup>. Only one button per transmitter is used





## Garage Door Operator Accessories



### A. XTrac Infrared Safety Beams

Product Code: 1302BEAM02



Provides additional safety against the door being closed onto a person or vehicle. Allows for the safe operation of the Autoclose function of the operator.

### B. CENTURION Transmitter

Product Code: TX1NV2433 (one-button); TX2NV2433 (two-button); TX3NV2433 (three-button); TX4NV2433 (four-button)



Incorporates ultra-secure code-hopping technology.

### C. SMARTGUARD or SMARTGUARDair Keypad

Product Code: SK/1BLK (hard-wired); SK/AIRBLK (wireless)



Cost-effective and versatile wired and wireless keypad, allowing access to pedestrians.

### D. Wireless Wall Switch

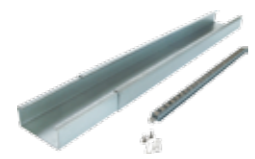
Product Code: XTRACPEND01



The four-button Wireless Wall Switch can operate the door, turn on the light and activate Holiday Lockout all without running any unsightly wires.

### E. Rail Extension Kit

Product Code: XTRACEXT00 (303mm); XTRACEXT01 (1000mm)



Available in 1000mm and 350mm lengths. Allows for increased garage door opening height. Converts a tip-up door XTrac to be suitable for sectional doors.

### F. External Manual Override

Product Code: 1302EKEY01



Key-operated release for convenient manual override of door opener from the outside.

## Garage Door Operator Kits

### XTrac Sectional Door Operator Full Kit

Product Code: XTRAC0001

- 1 x XTrac operator (head and drive unit) **1**
- Mounting hardware components **F**
- 1 x Onboard multichannel CENTURION receiver
- 1 x Wireless Wall Switch **C**
- 1 x 3m Drive rail track **G**
- 2 x 1.5Ah batteries **D**
- 2 x Four-button CENTURION transmitters **A**

### XTrac Tip-up Door Operator Full Kit

Product Code: XTRAC0002

- 1 x XTrac operator (head and drive unit) **1**
- Mounting hardware components **F**
- 1 x Onboard multichannel CENTURION receiver
- 1 x Wireless Wall Switch **C**
- 1 x 2.4m Drive rail track **G**
- 2 x 1.5Ah batteries **D**
- 2 x Four-button CENTURION transmitters **A**

### RDO Operator Full Kit

Product Code: RDO0001

- 1 x RDO operator **2**
- 1 x Controller **E**
- 1 x Voyager receiver **H**
- 2 x 1.5Ah batteries **D**
- 1 x One-button CENTURION transmitter **B**
- 1 x Four-button CENTURION transmitter **A**



**1**  
XTrac



**2**  
RDO



**A**  
Four-button CENTURION transmitter



**B**  
One-button CENTURION transmitter



**C**  
Wireless Wall Switch



**D**  
1.5Ah battery



**E**  
RDO controller



**F**  
XTrac mounting hardware



**G**  
XTrac drive track



**H**  
Voyager receiver