

INTERCOM SYSTEMS

An intercom completes any access control system by providing a means for the user of screening visitors before granting access, thereby significantly increasing security.



POLOphone Audio Intercom System

Product Code: **POLOH00WV1, POLOE2GOV3**

The POLOphone is an incredibly versatile and reliable audio intercom for domestic and small commercial or industrial installations. Using only two wires, the award-winning POLOphone system is simple, quick and easy to install and is expandable up to five components with a maximum of two Entry Panels. This intercom system showcases a happy union of exquisite form and the ultimate in function, and makes for a formidable and cost-effective home security system.

Main Features

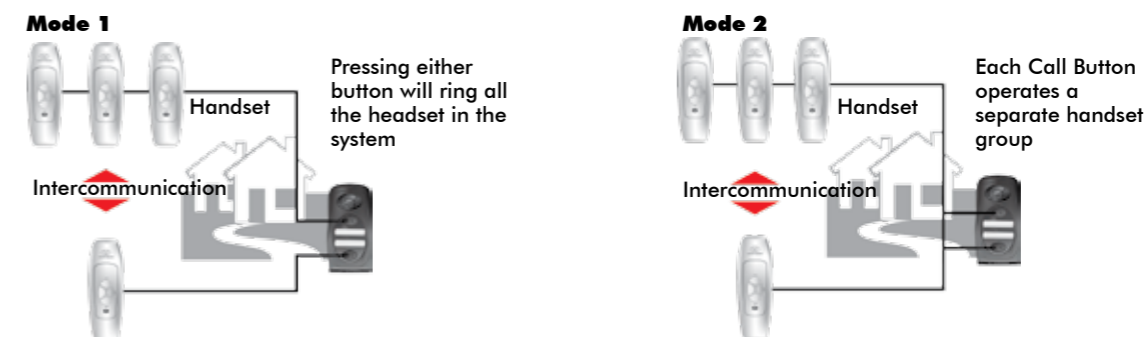
- Each Entry Panel fitted with two Call Buttons allowing for separate or joint calling
- Single or dual Call Button Modes of Operation – greater versatility as system grows
- Intercommunication between two groups of handsets for added convenience
- Each handset incorporates:
 - Gate release for each Entry Panel
 - Auxiliary control button
 - Intercommunication Call Button
 - Gate status LED
- 12V DC operation with optional battery backup – connect to a battery backup supply for critical power failure protection
- Built-in lightning protection – for greater reliability
- An optional POLOswitch may be fitted to maximise the security of the installation

System Expandability and Operation

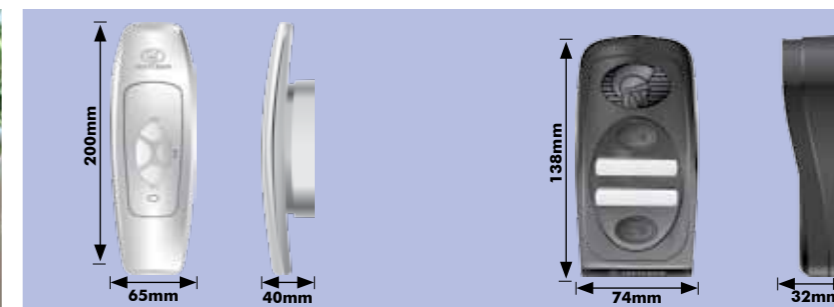
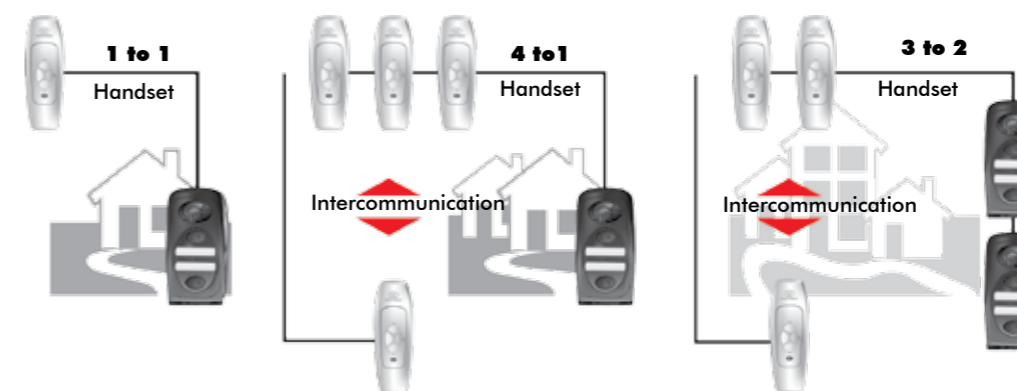
The POLOphone system can be expanded to include five components as follows:

- Up to two Entry Panels
- Each Entry Panel is fitted with two Call Buttons
- Two groups of handsets
- Up to three handsets per group
- Intercommunication between the two groups of handsets

In addition, the POLOphone supports two ways for calling handsets from the Entry Panel(s). In one mode, pressing either Call Button on the entry panel(s) will ring all the handsets in the system. In the second mode, each Call Button rings a separate handset group.



Configuration Options



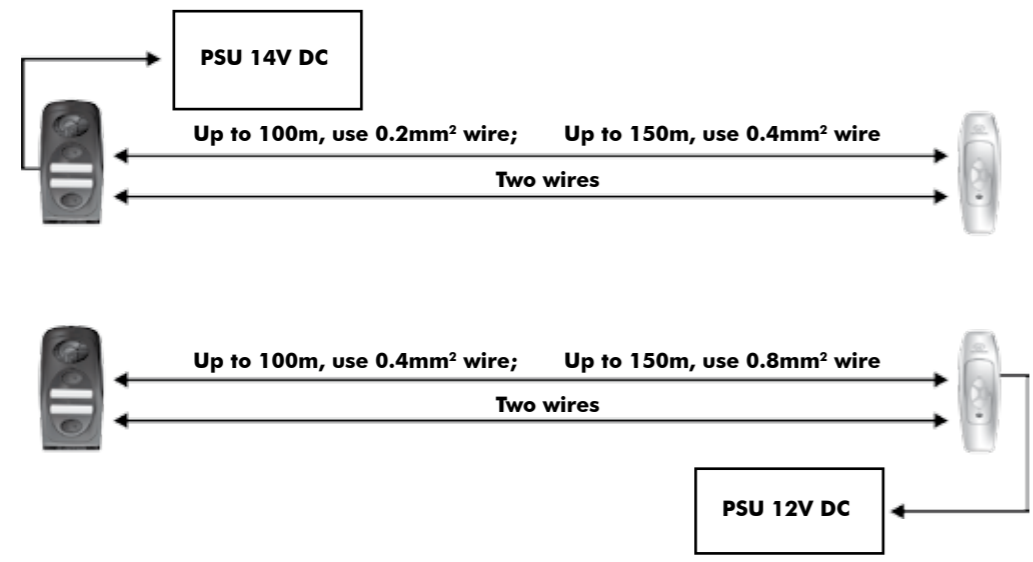


Technical Specifications

Technical Data	POLOphone
Input voltage ¹	12V – 14V DC supplied at anyone of the components ¹
Current draw	Quiescent – 150mA ±60mA for a One-to-One kit maximum – 200mA
Speech volume	Adjustable at each Entry Panel and handset
Wiring	Two common wires polarised for speech, call and lock release
Ring tone	Electronic while button is depressed with separate tones when calling from each Entry Panel in a system or between groups of handsets
Call confirmation at Entry Panel	✓
Wiring distance	Refer to thickness chart below
Gate/door release	Potential-free normally-open contact
Handset auxiliary contact	Requires separate wiring via two-wire bus
Operating temperature	-20°C to +50°C
Humidity	0 – 90% (non-condensing)
Degree of protection	IP55
Surge protection	✓
Packaging dimensions	
Handset	Width: 70mm x Depth: 47mm x Height: 211mm
Entry Panel	Width: 70mm x Depth: 40mm x Height: 150mm

¹ If the 12V DC gate motor supply dips when the motor starts up and the intercom is being used at the same time, the speech quality might be affected.

Wiring Distance and Thickness



POLOphone Handset

Product Code: **POLOH00W1**



Winner of the DISA Style Award. The design of the POLOphone handset is state-of-the-art. The hole in the centre of the handset allows it to clip over the cradle and merge smoothly into one compact unit.

With the handset remaining in position, the hole in the handset exposes the buttons on the face of the cradle allowing operation of the gate/door release and any auxiliary features.

POLOphone Entry Panel

Product Code: **POLOE2G0V3**



The easy-to-install Entry Panel is used to ring through to and communicate with all handsets on the two-wire bus line.

POLOphone Accessories

Anti-knock Shield

Product Code: **POLOAKSOV1**



It provides greater protection for the Entry Panel against vandalism. It is fabricated from 304 grade stainless steel with a brushed finish.

POLOphone Power Supply

Product Code: **POLOPSU0V1**



POLOphone power supply (two pin mains adaptor) including an adaptor for three pin socket.

Mounting Plate

Product Code: **1163M10520**



Provides the necessary fixing points and cable entry hole allowing direct mounting of the handset cradle bracket to it.

Gooseneck

Product Code: **XGSN-60000 or XSGN-6GLV0**



Steel pole for mounting intercom gate station or access control.

POLOswitch

Product Code: **POLOSWTCH1**



POLOswitch functions either to make up an external ring extender for a particular group of handsets or it acts as a secure gate trigger for a particular Entry Panel.

Intercom Cable

Product Code: **CABLE8COR**



A polarised 8 core two wire indoor communication cable of the POLOphone system.

G-SPEAK 2G GSM-based Intercom System

Product Code: G-SPEAK Classic: **GSC0K020V0**, G-SPEAK Classic+: **GSC1K020V0**

The G-SPEAK cellular intercom system is ideal for people on the move. Utilising your mobile phone as a handset you can answer your intercom, and open your gate, from just about anywhere with a 2G GSM network. Lengthy, expensive cable runs to the house and surface-mounted handsets are now a thing of the past.

Models Available

- G-SPEAK Classic:** The perfect access control and visitor screening solution for the home.
- G-SPEAK Classic+:** Added functionality for a comprehensive security system.

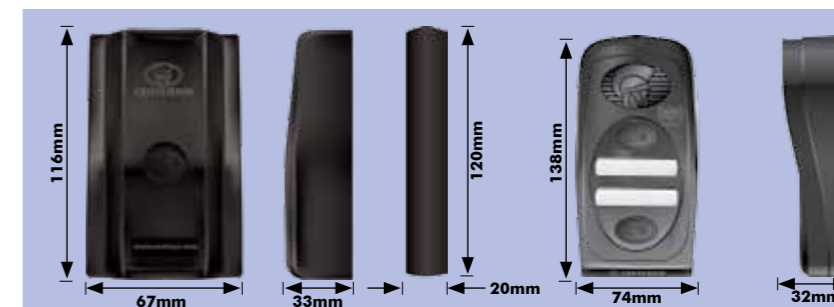
Main Features

- No wiring back to the house
- Answer your intercom from anywhere, giving the appearance that you're always at home - greatly increases security
- Open your gate from anywhere for maximum convenience
- Exceptional speech quality thanks to state of the art GSM audio technology
- G-SPEAK Classic allows up to ten people to open the gate from their mobile phones, and G-SPEAK Classic+ allows up to 100 users
- G-SPEAK Classic has one Output; G-SPEAK Classic+ has four channels, individually-configurable as Inputs or Outputs
- High-security system access control – only learned in, authorised mobile phones can access the system
- Split unit for high security – the GSM control module resides inside the property
- Typically mounted inside the gate motor
- Weatherproof enclosure for greater reliability
- Cost-effective system
- Eavesdropping feature allows you to listen in to any activity at your gate whilst keeping the speaker on the Voice Module muted (G-SPEAK Classic+ only)
- Compact design for aesthetically pleasing installations
- White LED backlight makes for beautiful low-light visibility of the gate station

Technical Specifications

Technical Data	G-SPEAK CLASSIC	G-SPEAK CLASSIC+
Input voltage	12V - 24V DC	
Current draw	Quiescent 30mA; maximum 300mA	
Call buttons on Calling Module	2	
Call confirmation at Calling Module	√	
Speech volume	Adjustable at Calling Module using Call Buttons	
Wiring requirements (between Calling Module and Controller)	6 wires, min 0.2mm ² ; max 10m between Entry Panel and Controller	
Channels	1 – Output only	4 - Individually configurable as either an Input or Output
Input activation	Not applicable	Rising edge / Falling edge / Both
Input filter	Not applicable	0.1s - 24 hours (in milliseconds)
Input blanking	Not applicable	0.1s - 24 hours (in milliseconds)
Output pulse time range	0.1s - 24 hours (in milliseconds)	
Network compatibility	2G GSM 900/1800 MHz	
SIM card required	Yes – Voice and Data services must be activated	
Airtime required	√	
Over-the-air firmware loading	√	
Operating temperature	-20°C to +50°C	
Calling Module illumination	Call Buttons and labels with backlit white LEDs	
Housing material	ABS	
Degree of protection	IP55	
Surge protection	√	
Packaging dimensions	Width: 171 mm x Depth: 47mm x Height: 232mm	

Functional Specifications	G-SPEAK CLASSIC	G-SPEAK CLASSIC+
Ability to switch/monitor devices and functions	1 Output to activate device/function activation	4 Inputs/Outputs to activate or monitor devices/functions (individually configurable)
Number of users	<ul style="list-style-type: none"> • Up to 2 Voice Phones (one per Call Button), plus • Up to 10 Switch Phones 	<ul style="list-style-type: none"> • Up to 4 Voice Phones (two per Call Button), plus • Up to 100 Switch Phones • Talk Mode (SMS via Voice Phone) • Listen Mode (SMS via Voice Phone) • SMS activation of Outputs
Special functionality	-	-
Systems Status query	Yes, via SMS (SMS via Voice Phone)	
Systems Settings query	Yes, via SMS (SMS via Voice Phone)	



G-SPEAK Classic



G-SPEAK Classic+

G-SPEAK Classic GSM Controller

Product Code: **GSC0MMDOVO**



This compact controller allows for convenient wireless communication between your G-SPEAK Classic Calling Module and mobile phone or landline and allows up to two Voice Phones and ten Switch Phones to be added to the system.

G-SPEAK Classic+ GSM Controller

Product Code: **GSC1MMDOVO**



The G-SPEAK Classic+ GSM controller adds advanced functionality such as input monitoring, SMS activation of outputs and Talk and Listen functions to your G-SPEAK GSM intercom system. In addition, it allows for up to four Voice Phones and 100 Switch Phones to be added.

G-SPEAK Calling Module

Product Code: **GSC0E02OVO**



A stylish backlit keypad with two Call Buttons and user-friendly terminals incorporating an innovative spring-loaded design for hassle-free wiring. Compatible with both the G-SPEAK Classic and G-SPEAK Classic+ GSM intercom systems.

Main Features

- Superb audio quality
- Weatherproof enclosure for greater reliability
- Compact design for aesthetically pleasing installations
- White LED backlight makes for beautiful low-light visibility of the gate station
- Electronically adjustable volume settings

Wireless high security at your fingertips

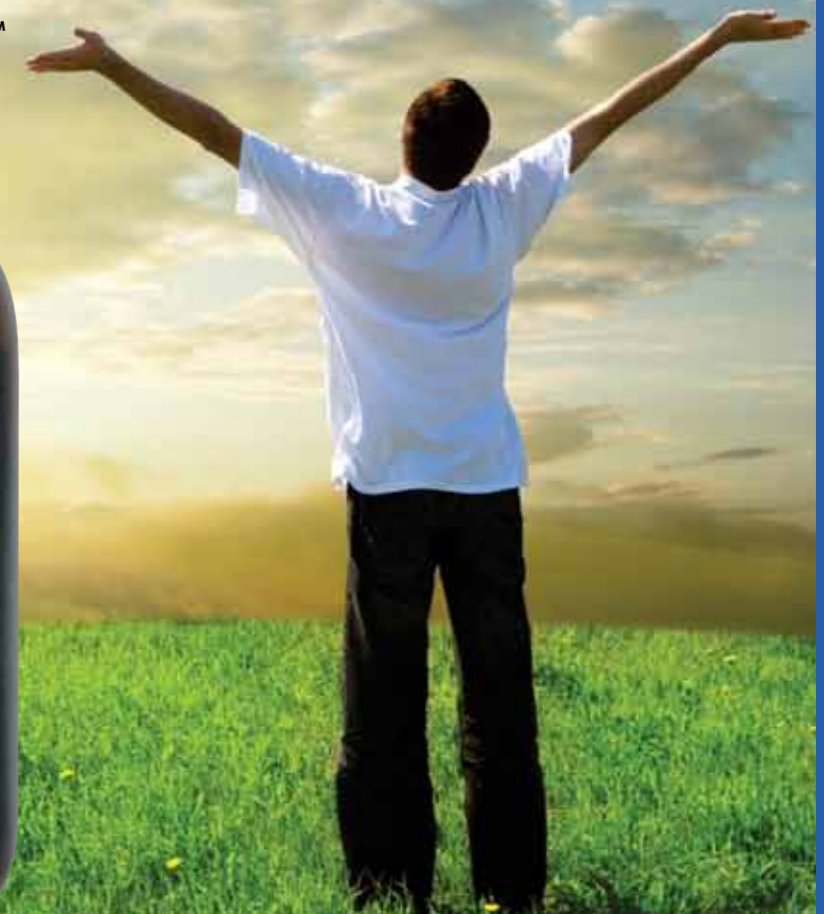
For keyless access control to your property, the SMARTGUARDair delivers unmatched high-security functionality and reliability.

Main Features:

- Fully wireless keypad for effortless installation and maximum flexibility
- Compatible with any CENTURION code-hopping receiver
- 15 channels to wirelessly activate multiple devices such as automated gates, pool pumps, lights, alarms, etc.¹
- Included AA Alkaline batteries provide up to two years of battery life
- Backup Memory Module compatible
- Up to 1000 user memory codes (one to ten digits each)

1. Certain functionality may require additional interface devices such as relays, isolators, etc.

SMART GUARD™
air



Call 0860 236 887

Technical support line: 0861 003 123 (Monday - Friday: 07h00 - 18h00)

www.CentSys.com

MKII

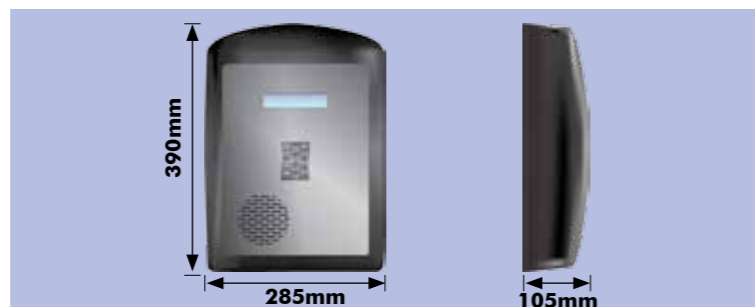
Multi-user Intercom System

Product Code: MKIIS_0001

A multi-unit intercom system that allows convenient screening of visitors at the entrance to large residential or business properties before allowing access. The system can be managed and programmed via a secure website. Since the system operates via GSM technology, there is - need for additional wiring other than the mains supply, making for a quick and easy installation. The MKII system also features greater security against SIM card theft by using new embedded SIM technology, thereby obviating the need for a removable SIM card.

Main Features

- Quick and easy installation, - wiring other than mains supply – operates via 2G GSM network
- Greater security against SIM card theft using new embedded SIM technology - SIM card not required
- Mobile or fixed line telephone doubles as an intercom handset and can activate the entrance gate and two other access devices
- Visitor may select from three contact numbers to call for access
- Allows for visitor departure control (Free-exit facility)
- Convenient web-based interface for system updating and reporting
- Programming can be done online or manually at the unit
- Online resident database administration
- Battery backup and built-in lightning protection for excellent reliability
- Robust and durable Entry Panel
- CENTURION code-hopping remote control integration and management
- Time-based access control allows for limited access to certain types of visitors, for e.g. contractors
- PIN-code entry (two pre-programmed codes per unit)
- Bulk SMS and email to complex residents
- Individual resident reporting for phone bills and gate openings
- Both successful and attempted-only gate openings are reported
- Unlimited, controlled access for residents
- Ability to communicate with security personnel at the gate
- Backlit LCD display (double-line) for easy-to-read, detailed messages
- Weatherproof enclosure suitable for outdoor or indoor environments
- Quick and reliable synchronisation and firmware updating
- Both successful and attempted-only gate openings are recorded
- Web-based interface for convenient administration of resident database, access control settings, upgrading and reporting



5

cool uses for your GSM Module

Just in case there's any doubt as to how absolutely, positively fantastic this technology is, let's take a moment to reflect on the fact that all of the things mentioned in this article can be done using your phone! Yes, you heard that right, it turns out it's good for more than playing Angry Birds on while pretending to be hard at work.

#1. Switch on a fridge

Fridges are notoriously heavy on electricity and, if it's one that you only use occasionally – say, a fridge aboard your boat or in your "man cave" - it's probably rather impractical (not to mention expensive) to keep the thing running year-round until it has run up a utility bill that looks like a teenager's phone bill. So what do you do? Just hook that puppy up to a GSM Module, Missed Call or SMS the unit an hour or two before the big game – and enjoy your ice cold brewskies right on cue. Now that's a bro move.

#2. Arm an alarm

Allow us to posit the following bone-chilling scenario: You're on your way to the dam armed with your rods and your cooler box, the sun has just started to creep over the horizon painting the sky in majestic shades of ochre. Today, you fish. And nothing is going to stop you. Suddenly you realise, much to your chagrin, that you forgot to arm the house alarm and there has been a spate of burglaries in your neighbourhood. Do you turn the car around and miss out on the opportunity to show the bass who's boss (see what we did there?)? Not if you have a GSM Module installed!

#3. Keep tabs

Up until this point we've mostly been focussing on our GSM products' switching capabilities, but did you know that you can use them for monitoring as well? Receive SMS notifications on your phone when your alarm is activated, mains power has failed or even when someone is blocking the infrared gate Safety Beams in front of your gate!

#4. Control the aircon

If airconditioners come with remotes, why would you want to control them with your phone? That's a fair point, but what if you're not in the physical vicinity of the aircon unit? Say, for example, that you're the proprietor of a bed and breakfast and you'd like guests to be greeted by a nice, cool room upon arrival but you don't necessarily have the time and resources to go to each and every room and switch on the aircon (or to switch it off once the ambient temperature has been sufficiently cooled down). Then, kemo sabe, you simply whip out your cell phone and issue the command, as it were.

#5. Monitor fluid level

Whether you want to know when your Koi pond is full, or you'd like to be notified when a diesel generator needs refilling, you can't go wrong with a GSM module acting as sentry. Since the module will notify you via text alert once the fluid reaches a certain level, there's no need to check on it manually and thus you'll have time for life's more important things (read: fishing and watching rugby).

In what creative way have you used your GSM module? Visit our Facebook page and let us know.

Legrand Multi-user Intercom Systems

Various kit combinations available - refer to Price List

A premium range of intercoms – from basic one-to-one kits to large apartment and commercial/industrial systems with both audio and video capability.

Main Features

Mechanical Features

- Exceptional aesthetics with well-styled handset and slimline, smooth contoured Entry Panel for optimum aesthetic appeal
- Durable Entry Panel, fabricated from aluminium for greater durability and excellent weatherproofing
- Crystal clear speech quality for greater user experience
- 12V operation with optional battery backup
- Seamless expandability using modular design
- Amazing system flexibility with the ability to add Entry Panels to other entrances in the same system, using a single changeover unit for the extra Entry Panel
- Easy intercommunication - have up to five handsets communicating with each other



SERIES 7 Entry Panel

Various kit combinations available - refer to Price List



Comes with a 1, 2, 4, 6, 8, 10 and 12 button Entry Panel including an audio module.

Entry Panel Audio Module Fascia

Various kit combinations available - refer to Price List



Has an audio module fascia with - Call Buttons and another with four Call Buttons.

Entry Panel Plain Call Button Fascia

Various kit combinations available - refer to Price List



A plain eight button Entry Panel Call Button fascia.

Blank Fascia

Various kit combinations available - refer to Price List



Entry Panel Electronics

Various kit combinations available - refer to Price List



Contains the electronics for the audio module, pushbutton panels and the pushbutton module connector harness.

Entry Panel Mounting Box

Various kit combinations available - refer to Price List



A mild steel epoxy-coated grey surface or stainless steel mounting boxes with rainshield; it comes with up to three modules.

