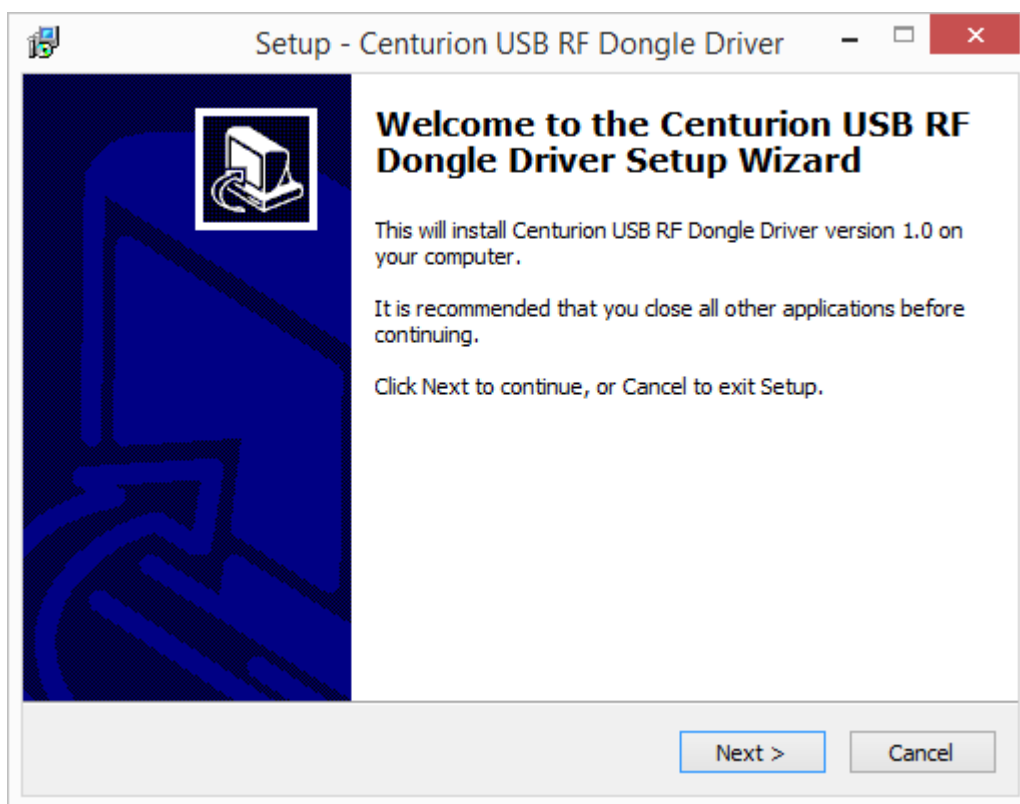
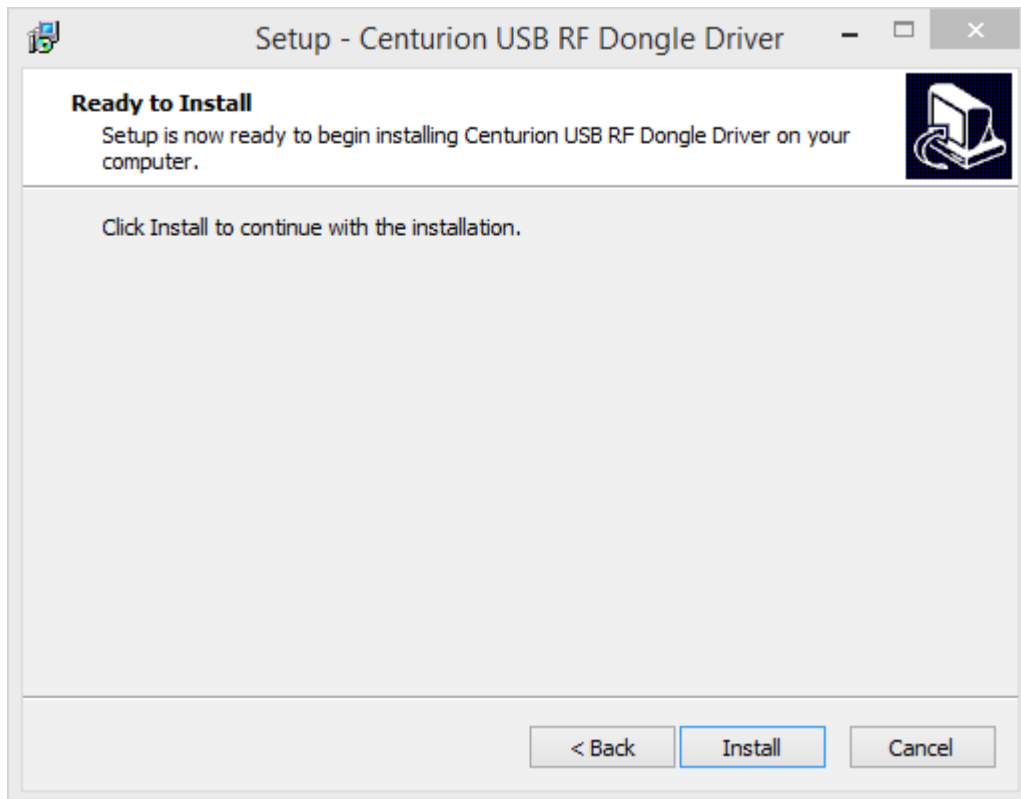


In order to utilise the CENTURION RF Dongle, it is necessary to first install the device drivers on your PC or laptop. This must be done prior to connecting the RF Dongle. Two sets of drivers will be installed, namely the CENTURION USB RF Dongle drivers, and certain device drivers that the operating system requires for the Dongle to work correctly.

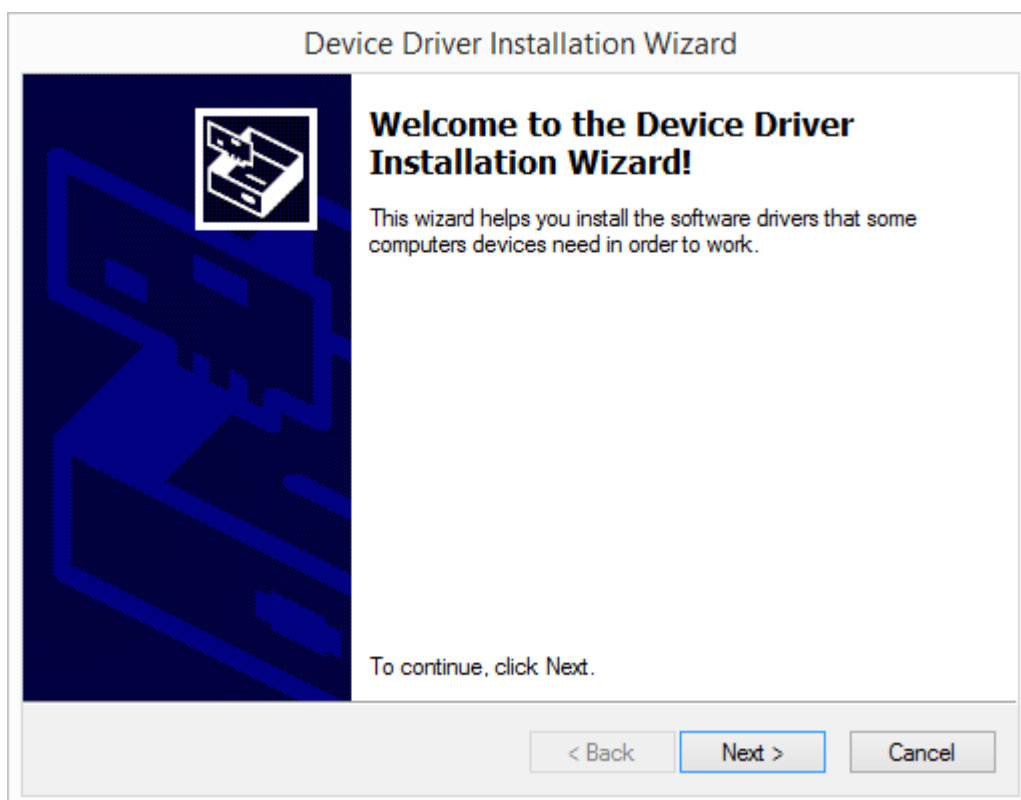
1. Click on the link named “ [CENTURION USB RF Dongle Setup File](#) ”
2. Select ‘Save as...’ and select a location on your computer’s hard drive where the file will be saved.
3. Open the folder containing the executable file (setup.exe), and double click on the file name.
4. The following pop-up window will appear. Click on ‘Next’.



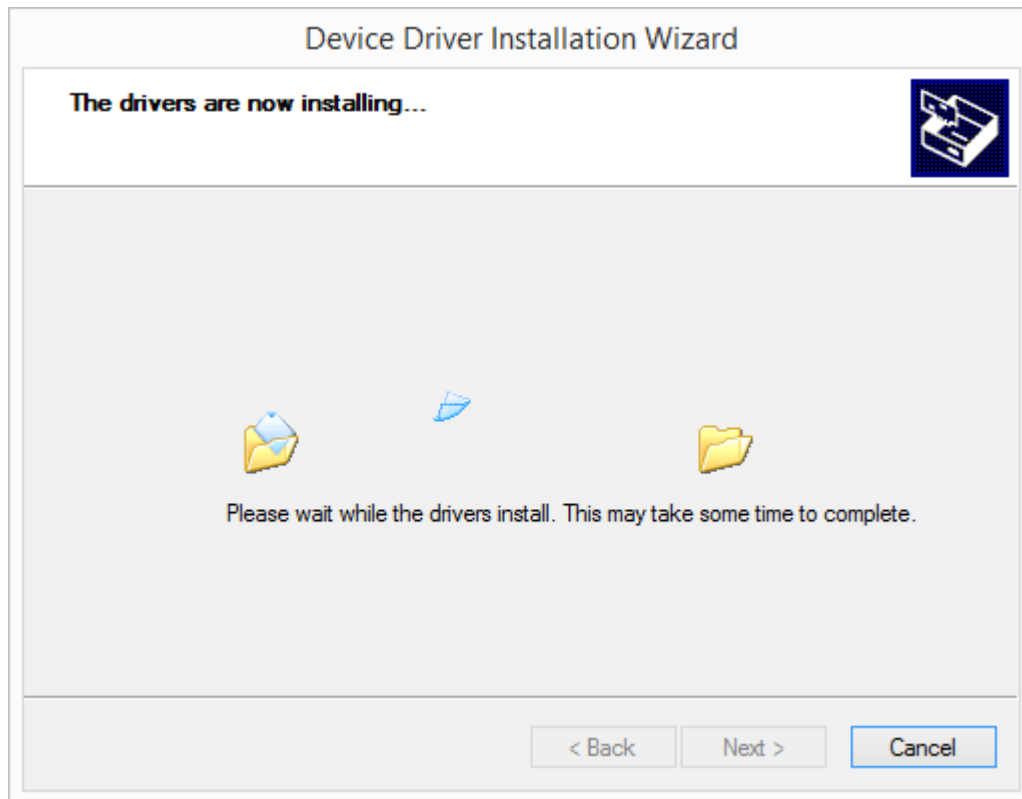
5. Click on ‘Install’.



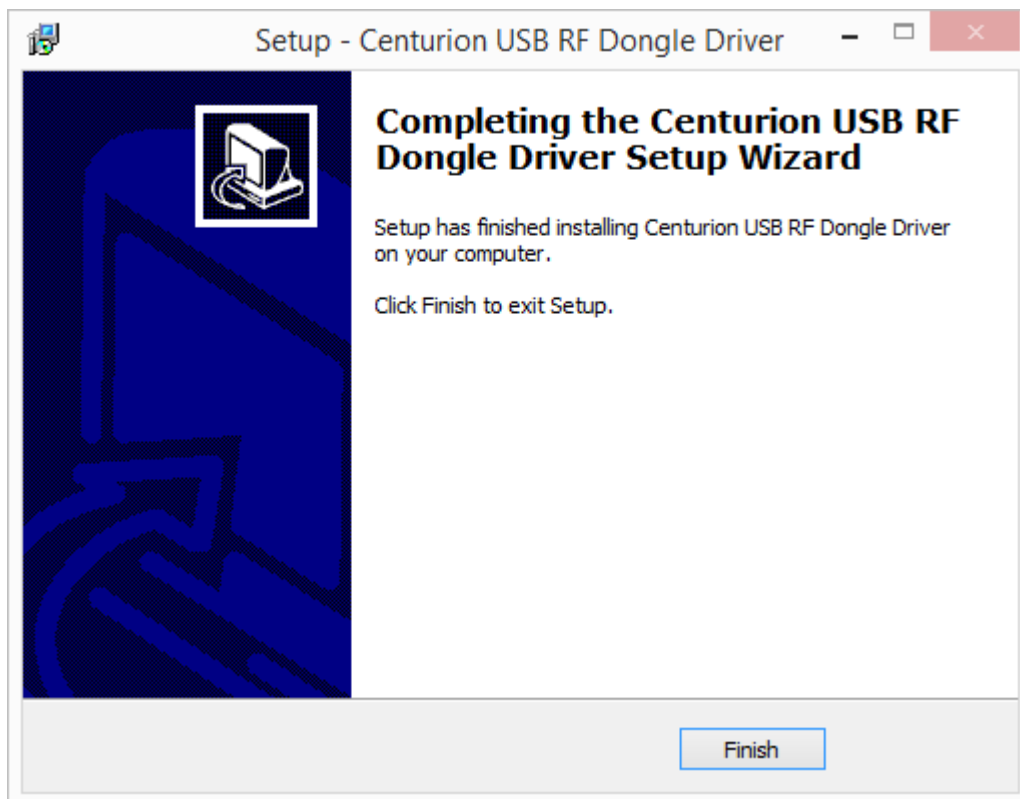
6. Click on 'Next' when the following window appears:



7. The device drivers will now be installed.



8. The following windows indicate the successful installation of the RF Dongle Drivers and the device drivers respectively. In both instances, click on 'Finish'.



9. The RF Dongle is now ready for use.