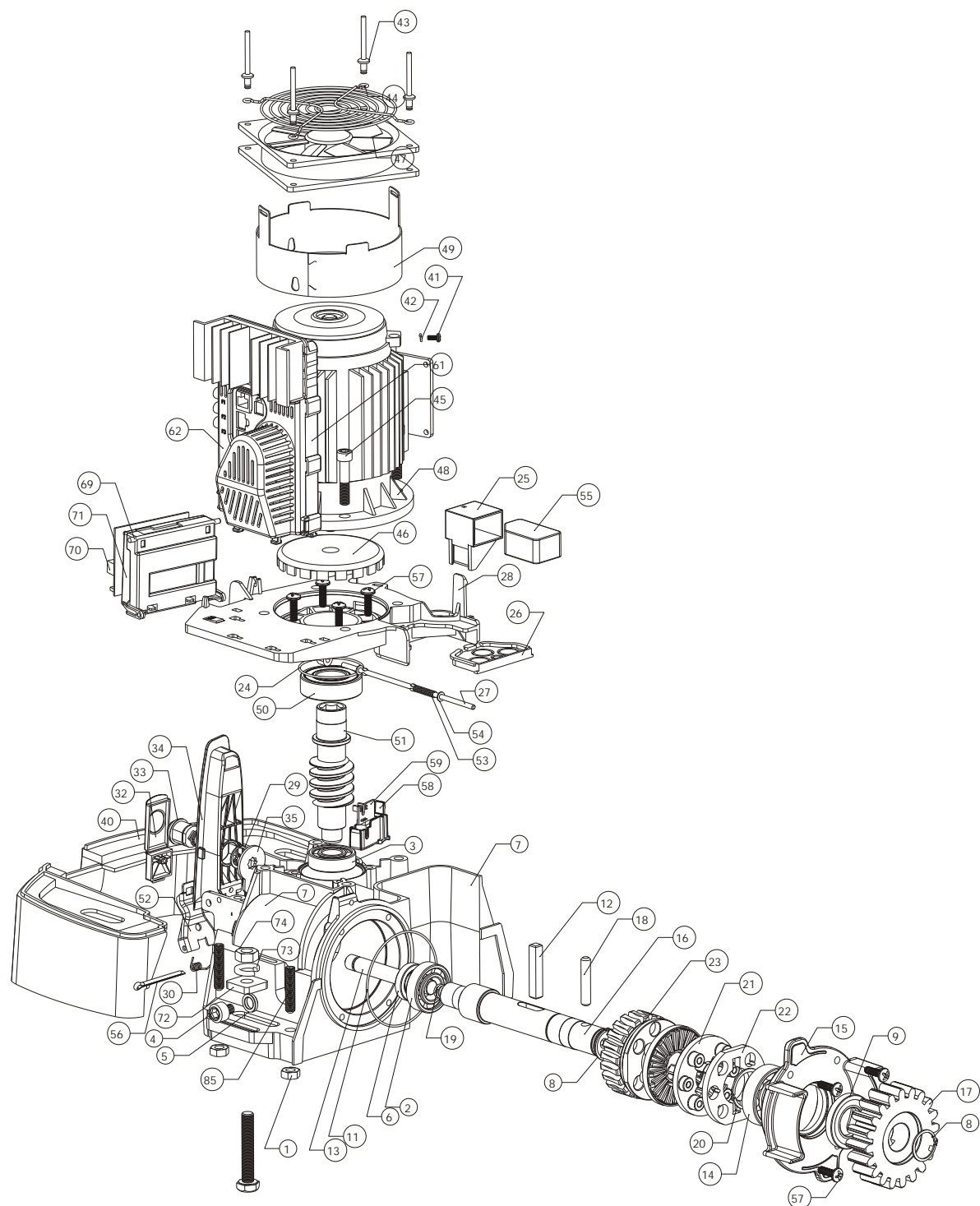


# ASSEMBLY DIAGRAM OF THE A10



Item No	Qty	Part Number	Description	Item No	Qty	Part Number	Description
1	4	1084000000080	Nut M8 Weld	44	4		Rivet blind aluminium 4.0x10
2	1	BB60040000	Brg 6004 Plain	45	1		FAN 120 X 25 FINGER GUARD
3	1	BB62030000	Brg 6203 Plain	46	4	140145008040	Bolt Cap hd part thread M8x40 Plated
4	1	1140125008235	Bold Cap hd full thread M8x10	47	1	1114 01 04 00	COUPLING+ ENCODER WHEEL
5	1	1114 13 05 00	Washer Fibre M8	48	1	12P-230-HB	FAN 120 X 25
6	1	BB/DS32207	Oil Seal 20 32 7	49	1	YS6324EXFAN	Motor 3ph Magtech .18KW B5
7	1	1114 13 01 00	Chassis	50	1	1114 01 02 00	FAN SUPPORT
8	2	F-CIRCLP24	Circlip ext 24mm	51	1	BB62052RSR	Brg 6205 ZZ
9	1	BB/SS47257	Oil Seal 25 47 7	52	1	1114 13 04 00	Wormshaft
10	1	1114041200	O Ring RMT 2.0x10	53	1	1114 05 05 03	RELEASE LEVER PRESSING
11	1	1114041100	O Ring RMT 2.5x80	54	1	1114 04 05 00	Spring compression ID 4.2 WIRE 0.7 37 LONG
12	1	1114 04 06 00	KEY RELEASE 8x8	55	2		Washer M4 Plated
13	1	1114 04 07 00	ACTUATING PIN (MANUAL RELEASE)	56	1		Mag sw simple
14	1	BB62050000	Brg 6205 Plain	57	1	SPLITP-60X3.8	Split Pin 50X3.8
15	1	1114 04 09 00	OUTPUT BEARING HOUSING (INC PINION GUARD)	58	8		M6X20 pan pozi taplite
16	1	1114 04 01 01	OUTPUT SHAFT	59	1	1114 12 01 00	ENCODER HSG
17	1	1114 04 10 01	OUTPUT PINIION 20T MOD4	60	1	1114 12 02 00	PCB ENCODER
18	1	F0840DOWEL	OP Pinion pin	61	1	1114 10 01 00	PCB-POWER
19	1	18159	SPRING COMPRESSION OD 13.5 WIRE 1.5	62	1	1114 10 02 00	PCV-POWER HSG SOLDER SIDE
20	1	F-CIRCLP30	Circlip ext 32mm	63	1	1114 10 04 00	PCB-POWER HSG COMPONENT SIDE
21	2	1114 04 03 00	RELEASE TOOTHED DISK	64	1	1114 10 05 00	Heatsink
22	1	1114 04 05 00	RELEASE TORQUE PLATE	65	1	1114 10 03 00	Heatsink spacer
23	1	1114 04 02 00	WORMWHEEL 22T MOD 3	66	1		FET
24	1		O Ring RMT 1.6x52	67	1		PWR Connector Male (5 pin)
25	1	1114 03 03 00	Mag sw mtg	68	1		PWR Connector Female (5 pin)
26	1	1114 03 02 00	Cable support plate	69	1		RJ45 SOCKET 8 PIN
27	1	1114 03 04 00	COVER LOCKING PIN	70	1	1114 11 01 00	PCB LOGIC MTG TRAY
28	1	1114 03 01 00	Mtg flange B5 Fr63	71	1	1114 11 03 00	PCB-LOGIC
29	1		Circlip ext 17mm	72	1	1114 11 02 00	PCB LOGIC HINGED COVER
30	1	114 05 06 00	Spring-torsion	73	2	1114 13 03 00	WASHER (load spreader)
31	1	140145006050	Bolt Cap hd part thread M6x50	74	2	W320210000	Washer M10 Spring Plated
32	1	N3201106000	M6	75	2	N120110000	M10
33	1	1114 05 02 00	LOCK COVER	76	2	1010125010060	BOLT FULL THREAD M10x60 PLATED
34	1	M-CP6?????	LOCK (EXC CAM)	77	1	1114 13 02 02	Foundation Plate
35	1	1114 05 01 00	RELEASE HANDLE	78	1	1114 14 01 00	Cover Motor + Electronics E
36	1	1114 05 03 00	CAM FOR CAM LOCK	79	1	1114 14 02 00	Cover vent
37	2	1114 01 02 02	THUMBSCREW SHELL (MALE)	80	1	1114 16 03 00	Cable Motor -Pwr PCB
38	2	1114 01 02 01	THUMBSCREW SHELL (FEMALE)	81	1	1114 16 02 00	Cable Logic PCB -Pwr PCB
39	2	1260007613164	NUT NYLON (SKIFFY)	82	1	1114 16 04 00	Cable Mag sw-Encoder sensor -Logic PCB
40	2	1114 01 02 04	WASHER (LOWER COVER FASTENER)	83	1	1114 16 01 00	Cable Pwr PCB -Fan
41	1	1114 01 01 00	COVER CHASSIS	84	1		Rack-steel (long)
42	1		M4x8 pan pozi	85	1		Oil bottle
43	1		M4 Spring	86	4		Bolt Socket hd grub M8X40

DWG. No. 1114.D.03.0004\_1 DRAWING NAME: EXPLODED ASSEMBLY DIAGRAM OF A10  
 DATE: 21.06.04 ref. 1114.D.03.0004\_1

