



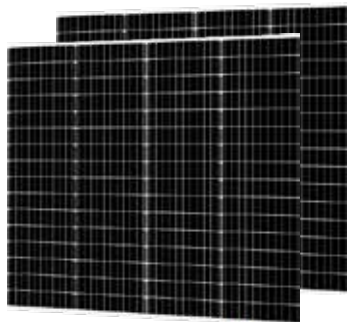
CENTURION

80W Solar panel specifications

Our range of solar panels are constructed from ultra-efficient monocrystalline and have been designed to provide a reliable and cost-effective alternative energy solution for applications where mains power is either not available, or not desirable.

Main features:

- Clever engineering makes for minimal power losses during prolonged periods in shade
- Fully weather-resistant - durable white tempered glass, EVA resin and weather-resistant film enclosed in anodised aluminium frame



Comprehensive Certificates

- IEC61215, IEC61730
- ISO9001:2015 Quality management systems
- ISO45001:Environmental management systems
- ISO45001:2018 Occupational health and safety management systems



Electrical Parameters at (STC)

Module	Power (W)	Module Efficiency(%)	Open Circuit(V)	Short Circuit Current(A)	Voltage Pmp (Vmp)	Current Pmp (Imp)	Power Tolerance
MY080M	80W	19.1%	43.60V	2.32A	36.48V	2.19A	±3%

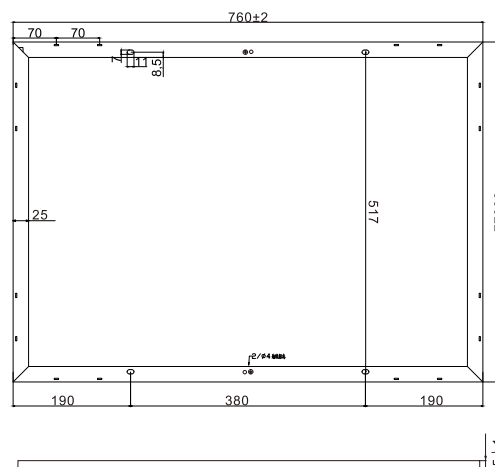
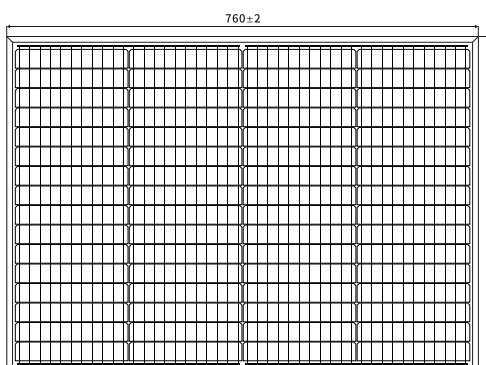
Mechanical Parameters

Cell(Type/Size)	MONO(182mm)
Solar Cells Number	64Pcs(4x16)
Dimension	550x760x3025mm
Weight	11KG
Tempered glss	3.2 mm High Permeability Coated
Frame	Anodized aluminum alloy
Junction Box	IP67, 1*bypass diode
Cable	2. 5mm ² , (+)500mm/(-)500mm
Connector	Original MC4/Compatible MC4
Mechanical Load	Front 5400Pa/back 2400PA

Packing

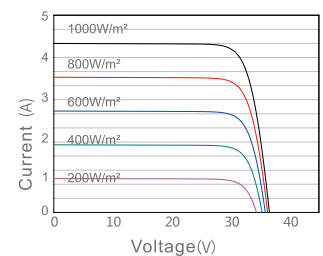
Module Type	MY080M-64
Carton Size	570x780x75mm
Number	2pcs/ctn
Volume	0.03CBM
20GP Container	1776Pcs
40HQ Container	4032Pcs

Physical dimensions

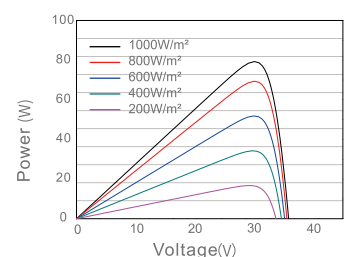


Characteristics

Current Voltage Curve



Power Voltage Curve



Current Voltage Curve MY080M-64

